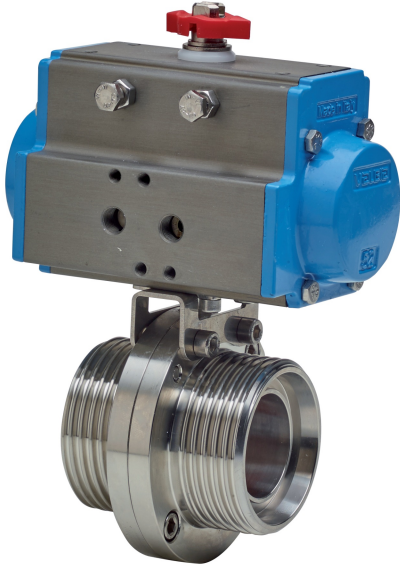
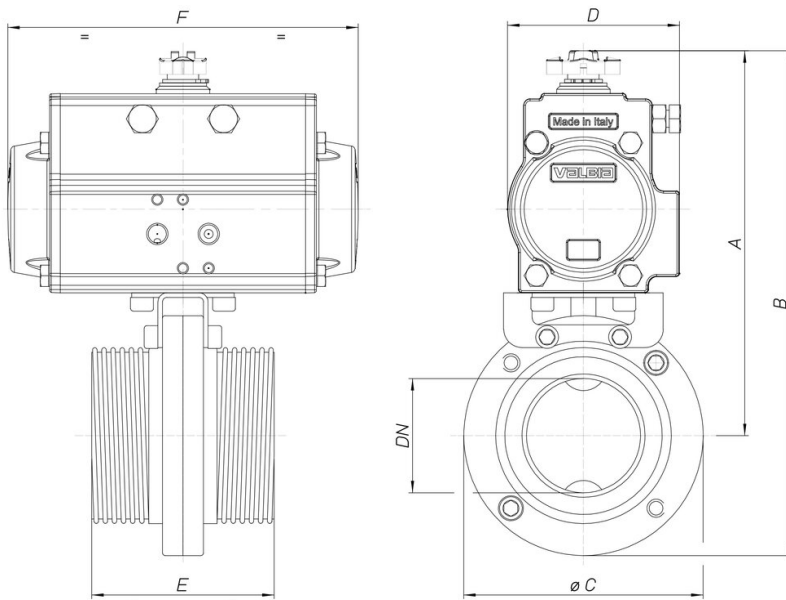


8P015800

Absperrklappe, geeignet für Lebensmittel, aus Edelstahl
 AISI 304L , Anschlüsse DIN 11851 I/I, mit Antrieb.



Technische Spezifikationen



MOD	PN	A	B	ØC	D	E	F	ACT.
8P01580006	6	150	189	79	71	68	141	SR 52
8P01580007	6	155	197	85	71	76	141	SR 52
8P01580008	6	169	215	92	81	76	164	SR 63
8P01580010	6	193	245	105	95	80	210	SR 75
8P01580012	6	216	279	125	106	82	241	SR 85
8P01580014	6	224	292	137	106	84	241	SR 85
8P01580018	6	249	327	157	123	88	275	SR 100