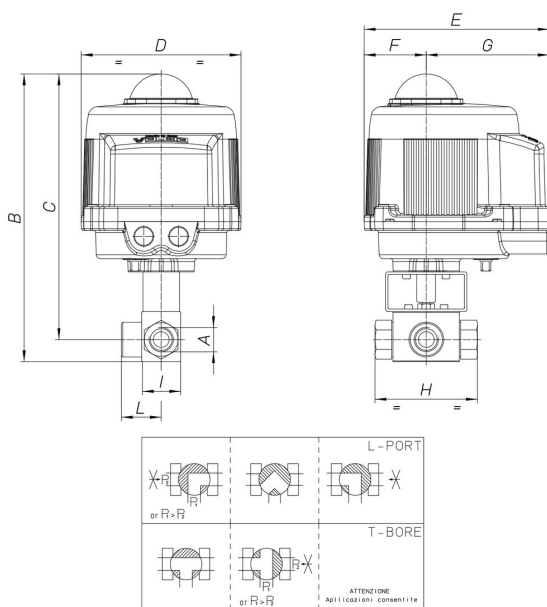


8M130

3 way ball valve, AISI 316L, L or T port, diverting only, F/F/F threaded, for high pressure, for hydraulic oil, emulsion, gas. For particular applications refer to sales department.



Technische Spezifikationen



| MOD | PN | B | C | D | E | F | G | H | I | L | ACT. | KIT |
|------------|-----------|----------|----------|----------|----------|----------|----------|----------|----------|----------|-------------|------------|
| 8M13000103 | 400 | 279 | 261 | 161 | 187 | 63 | 124 | 73 | 35 | 37 | VB030M | RI3740 |
| 8M13000203 | 400 | 279 | 261 | 161 | 187 | 63 | 124 | 73 | 35 | 37 | VB030M | RI3740 |
| 8M13000403 | 400 | 279 | 261 | 161 | 187 | 63 | 124 | 73 | 35 | 37 | VB030M | RI3740 |
| 8M13000104 | 350 | 282 | 264 | 161 | 187 | 63 | 124 | 83 | 37 | 40 | VB030M | RI3740 |
| 8M13000204 | 350 | 282 | 264 | 161 | 187 | 63 | 124 | 83 | 37 | 40 | VB030M | RI3740 |
| 8M13000404 | 350 | 282 | 264 | 161 | 187 | 63 | 124 | 83 | 37 | 40 | VB030M | RI3740 |
| 8M13000105 | 350 | 294 | 271 | 161 | 187 | 63 | 124 | 95 | 45 | 52 | VB030M | RI4037 |
| 8M13000205 | 350 | 294 | 271 | 161 | 187 | 63 | 124 | 95 | 45 | 52 | VB030M | RI4037 |
| 8M13000405 | 350 | 294 | 271 | 161 | 187 | 63 | 124 | 95 | 45 | 52 | VB030M | RI4037 |
| 8M13000106 | 350 | 325 | 296 | 176 | 197 | 63 | 134 | 112 | 55 | 60 | VB060M | RI4038 |
| 8M13000206 | 350 | 325 | 296 | 176 | 197 | 63 | 134 | 112 | 55 | 60 | VB060M | RI4038 |
| 8M13000406 | 350 | 325 | 296 | 176 | 197 | 63 | 134 | 112 | 55 | 60 | VB060M | RI4038 |