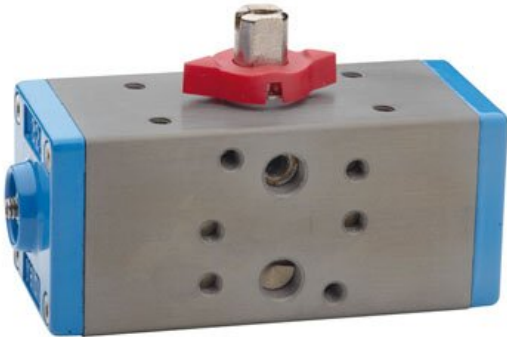
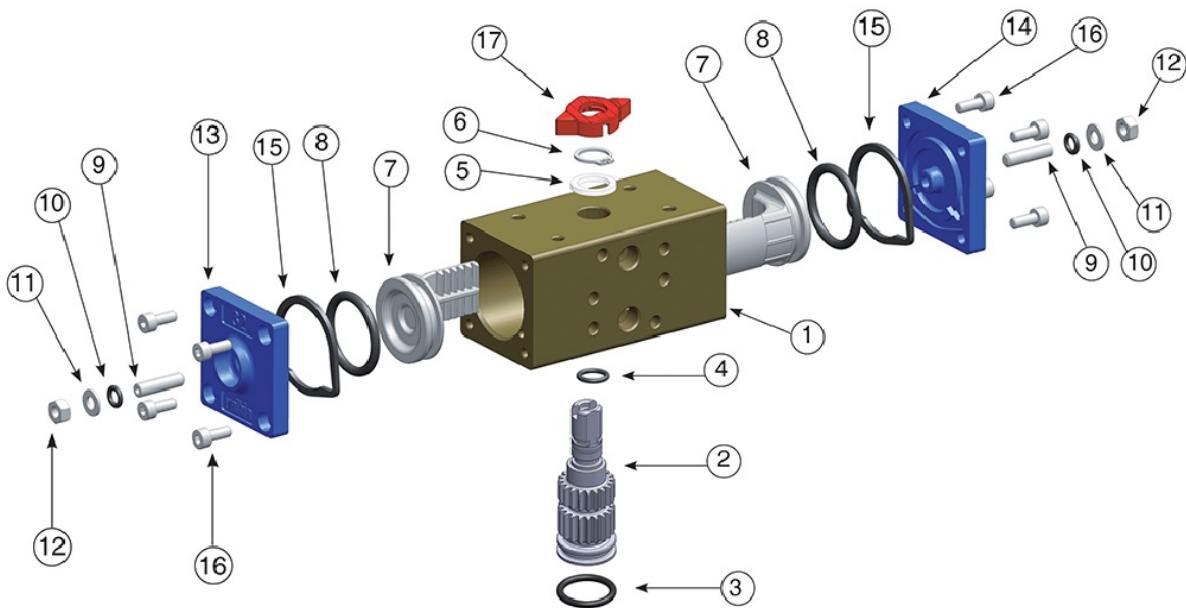
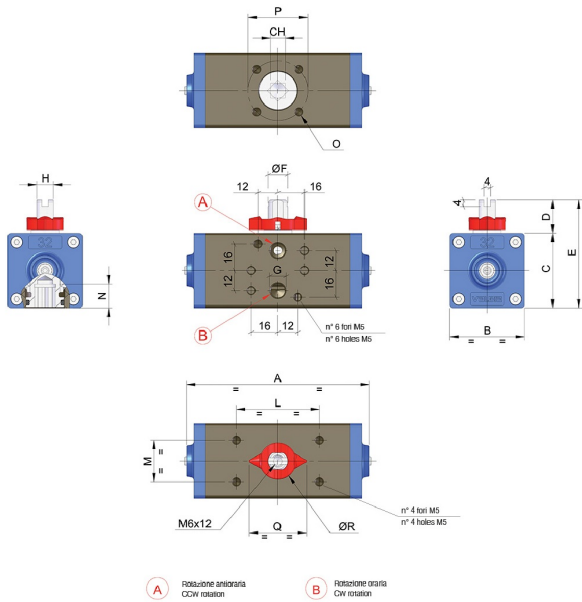


## MOD. 32



### Especificaciones técnicas





POSICIÓN	NOMBRE DE LA PIEZA	MATERIAL	TREATMENT	N.º PIEZAS
1	Body	Extruded aluminium	Hard anodized	1
2	Anti-blowout pinion	Steel	Nickel plated	1
• 3	O-ring	NBR/FKM	-	1
• 4	O-ring	NBR/FKM	-	1
• 5	Spacer ring	POM	-	1
6	Snap ring	Steel	Nickel plated	1
7	Piston	Die cast aluminium	-	2
• 8	O-ring	NBR/FKM	-	2
9	Stop bolt	Stainless steel	-	2
• 10	O-ring	NBR/FKM	-	2
11	Washer	Stainless steel	-	2
12	Stop boltretaining nut	Stainless steel	-	2
13	Left end cap	Die cast aluminium	Painted	1
14	Right end cap	Die cast aluminium	Painted	1
15	End cap seats	NBR/FKM	-	2
16	End cap fixing screw	Stainless steel	-	8
17	Position indicator	Gomma termoplastica TPEThermoplastic rubber TPE	-	1

MOD	FORATURA DRILLING ISO 5211	CH	A	B	C	D	E	ØF	G ISO 7/1	H	L	M	N	O	P	Q	ØR
MOD. 32	F03	9	110	45	45	20	65	11,8	1/8"	10	50	25	12	M5x7,5	36	34,5	22

## Aplicaciones



FOOD &  
BEVERAGE



HVAC



PULP & PAPER



PAINTS &  
SOLVENTS



WATER  
TREATMENT



CHEMICAL



OEM



OIL & GAS