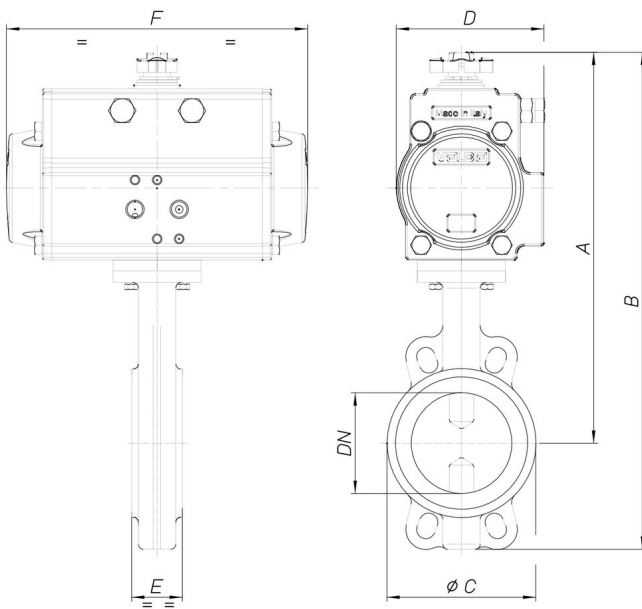




8P019500

Butterfly valve Wafer type PN16 (from DN50 to DN300), PN10 (from DN350 to DN600), body in cast iron GG25+ epoxy painting, disc GGG40 nickeled, EPDM [Valpres art. 600104] or NBR [Valpres art. 600117] seat from DN50 to DN300, EPDM seat art. 905276 from DN350 to DN600.

Especificaciones técnicas



| MOD | PN | A | B | Ø C | D | E | F | ACT. | RI |
|------------|-----------|----------|----------|------------|----------|----------|----------|-------------|-----------|
| 8P01950010 | 16 | 255 | 326 | 100 | 71 | 43 | 141 | DA 52 | 3836 |
| 8P01950012 | 16 | 267 | 345 | 120 | 71 | 46 | 141 | DA 52 | 3836 |
| 8P01950014 | 16 | 281 | 370 | 127 | 81 | 46 | 164 | DA 63 | 3838 |
| 8P01950018 | 16 | 315 | 417 | 161 | 95 | 52 | 210 | DA 75 | 3839 |
| 8P01950019 | 16 | 340 | 463 | 190 | 106 | 56 | 241 | DA 85 | 3840 |
| 8P01950020 | 16 | 355 | 493 | 215 | 106 | 56 | 241 | DA 85 | 3841 |
| 8P01950021 | 16 | 434 | 602 | 268 | 137 | 60 | 333 | DA 115 | 3965 |
| 8P01950077 | 16 | 482 | 689 | 325 | 148 | 68 | 372 | DA 125 | 3865 |
| 8P01950078 | 16 | 541 | 784 | 375 | 164 | 78 | 435 | DA 140 | 3868 |