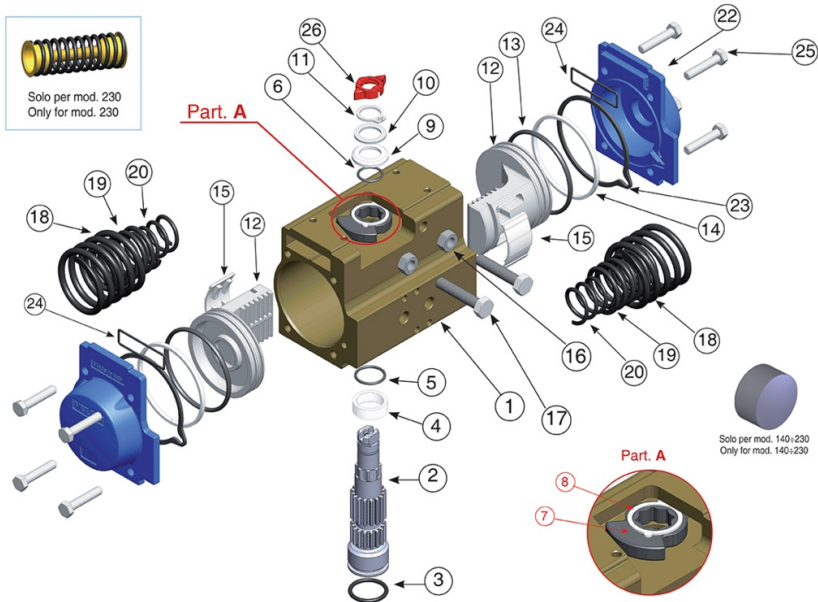
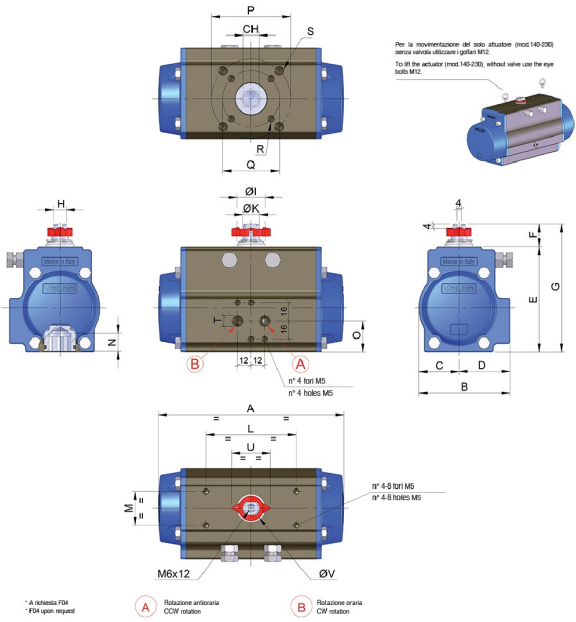


MOD. 180



Spécifications techniques

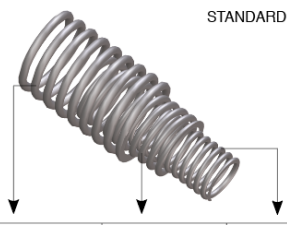




VALIDO DA MOD. 160 A MOD. 200
 VALID FROM MOD. 160 TO MOD. 200

SET DI MOLLE
 SPRING SETS

STANDARD SET 06



| SET | MOLLA ESTERNA EXTERNAL SPRING | MOLLA CENTRALE CENTRAL SPRING | MOLLA INTERNA INTERNAL SPRING |
|-----|----------------------------------|----------------------------------|----------------------------------|
| 01 | - | 2 | - |
| 02 | 2 | - | - |
| 03 | 1 | 2 | - |
| 04 | 2 | - | 2 |
| 05 | 2 | 2 | - |
| 06 | 2 | 2 | 2 |

| POSITION | NOM DE LA PIÈCE | MATÉRIEL | TREATMENT | N.° PIÈCES |
|----------|-------------------------|---|---------------|--------------------|
| 1 | Body | Extruded aluminium | Hard anodized | 1 |
| 2 | Anti-blowout pinion | Steel | Nickel plated | 1 |
| • 3 | O-ring | NBR/SILICONE/FKM | - | 1 |
| • 4 | Spacer ring | POM/AMODEL/STANYL/PEEK | - | 1 |
| • 5 | O-ring | NBR/SILICONE/FKM | - | 1 |
| • 6 | O-ring | NBR/SILICONE/FKM | - | 1 |
| 7 | Cam | Stainless steel | - | 1 |
| 8 | Spacer | POM/MINLON/PTFE/PEEK | - | 1 |
| • 9 | Spacer | POM/MINLON/PTFE/PEEK | - | 1 |
| 10 | Washer | Stainless steel | - | 1 |
| **11 | Snap ring | Steel | Nickel plated | 1 |
| 12 | Piston | Die cast aluminium | - | 2 |
| • 13 | O-ring | NBR/SILICONE/FKM | - | 2 |
| • 14 | Antifriction ring | POM/AMODEL/STANYL/PTFE/MINLON/PEEK | - | 2 |
| • 15 | Thrust block | POM-AMODEL-STANYL-DELTRIN+MOS2/PEEK | - | 2 [4] |
| 16 | Stop bolt retaining nut | Stainless steel | - | 2 |
| 17 | Stop bolt | Stainless steel | - | 2 |
| 18 | External spring | Steel | Painted | See spring setting |
| ***19 | Central spring | Steel | Painted | See spring setting |
| 20 | Internal spring | Steel | Painted | See spring setting |
| 21 | Left end cap | Die cast aluminium | Painted | 1 |
| 22 | Right end cap | Die cast aluminium | Painted | 1 |
| 23 | End cap seats | NBR/SANTOPRENE/SILICONE/FKM/ME0020-70 | - | 2 |
| 24 | O-ring | NBR/SILICONE/FKM | - | 2 |
| 25 | End cap fixing screw | Stainless steel | - | 8 |
| 26 | Position indicator | Gomma termoplastica TPEThermoplastic rubber TPE | - | 1 |

• Parts subject to wear

* * Reinforcedseries DIN 471-UNI 7436 Valid for mod. 140-160-180-200-230 only.

* * * Only for mod. 160-180-200. Only square connection at 45°

| MOD | FORATURA DRILLING ISO 5211 | CH | A | B | C | D | E | F | G | H | ØI | ØK | L | M | N | O | P | Q | R | S | T ISO 7/1 | U | ØV |
|----------|----------------------------|----|-----|-----|----|-----|-----|----|-----|----|----|----|--------|----|----|----|-----|-----|--------|--------|-----------|------|----|
| MOD. 180 | F10 - F14 | 36 | 493 | 213 | 98 | 115 | 253 | 30 | 283 | 36 | 62 | 45 | 80/130 | 30 | 43 | 99 | 140 | 102 | M10X15 | M16X25 | 1/4" | 80,5 | 60 |

Applications



FOOD & BEVERAGE



HVAC



PULP & PAPER



PAINTS & SOLVENTS



WATER TREATMENT



CHEMICAL



OEM



OIL & GAS