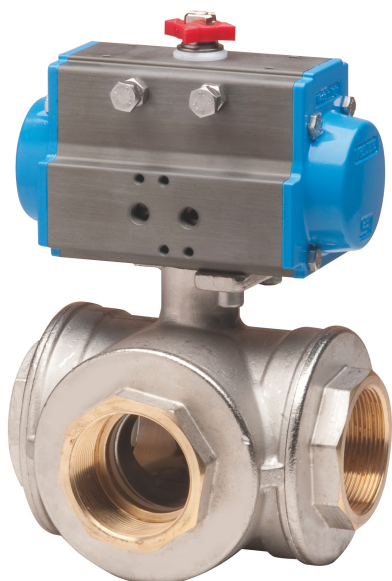
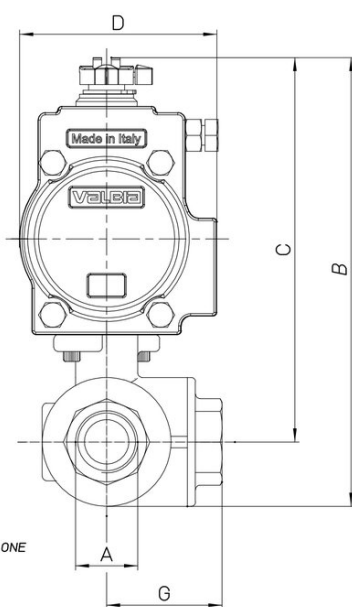
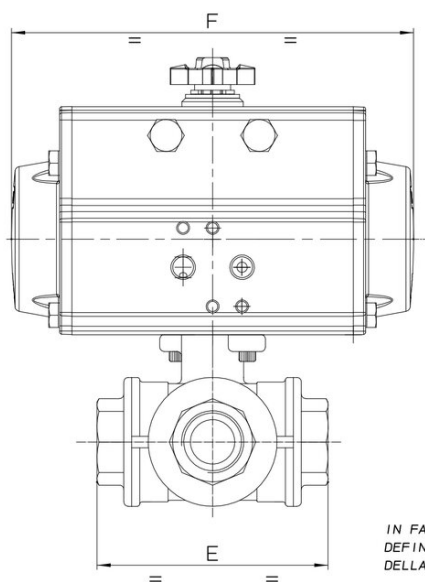


8P008500



3 voies vannes b.s. en laiton CW 617N [RB Art. 3500 (T) - 3600 (L)], sièges en PTFE + VITON, taraudage F/F/F, passage TOTAL, "T" ou "L", avec actionneur. Pas indiquée pour solvants.

Spécifications techniques



IN FASE D'ORDINE
DEFINIRE LA POSIZIONE
DELLA SFERA'

| MOD | PN | A | B | C | D | E | F | G | ACT. | RI |
|------------|-----------|----------|----------|----------|----------|----------|----------|----------|-------------|-----------|
| 8P00850002 | 30 | 1/4" | 149 | 132 | 71 | 67 | 141 | 34 | SR 52 | 3798 |
| 8P00850003 | 30 | 3/8" | 149 | 132 | 71 | 67 | 141 | 34 | SR 52 | 3798 |
| 8P00850004 | 30 | 1/2" | 154 | 134 | 71 | 77 | 141 | 39 | SR 52 | 3798 |
| 8P00850005 | 30 | 3/4" | 179 | 155 | 81 | 87 | 164 | 44 | SR 63 | 4025 |
| 8P00850006 | 16 | 1" | 190 | 160 | 81 | 105 | 164 | 53 | SR 63 | 4025 |
| 8P00850007 | 10 | 1"1/4 | 209 | 173 | 81 | 123 | 164 | 62 | SR 63 | 4025 |
| 8P00850008 | 10 | 1"1/2 | 262 | 219 | 106 | 139 | 241 | 70 | SR 85 | 4026 |
| 8P00850010 | 10 | 2" | 299 | 243 | 123 | 166 | 275 | 83 | SR 100 | 4026 |