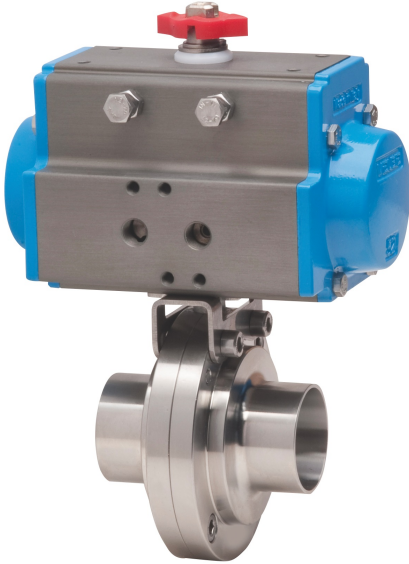
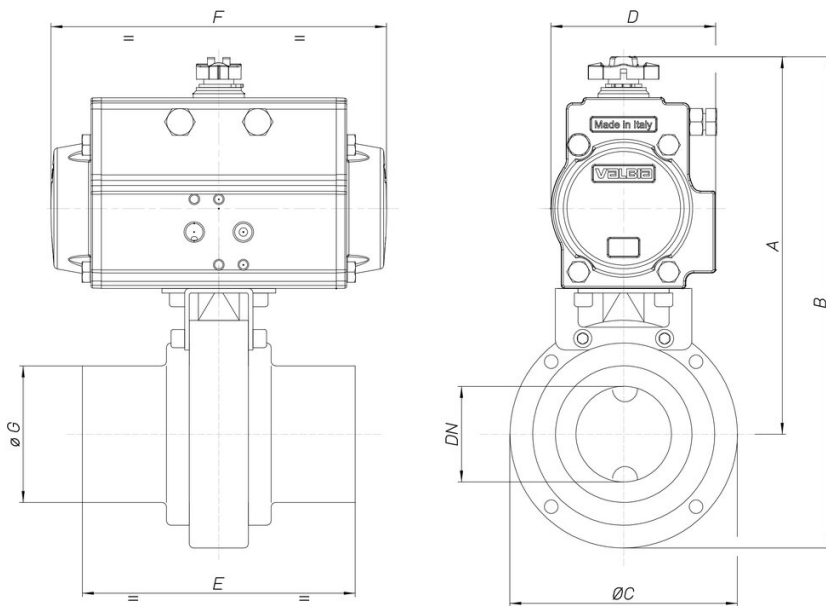


8P026100

Butterfly valve, din weld connections, for tube DIN 11850, stainless steel AISI 304.



Spécifications techniques



| MOD | PN | A | B | ØC | D | E | F | ØG | ACT. |
|------------|-----------|----------|----------|-----------|----------|----------|----------|-----------|-------------|
| 8P02610006 | 6 | 113 | 153 | 79 | 45 | 68 | 110 | 28 | DA 32 |
| 8P02610007 | 6 | 155 | 197 | 85 | 71 | 76 | 141 | 34 | DA 52 |
| 8P02610008 | 6 | 157 | 203 | 92 | 71 | 76 | 141 | 40 | DA 52 |
| 8P02610010 | 6 | 175 | 227 | 105 | 81 | 80 | 164 | 52 | DA 63 |
| 8P02610012 | 6 | 202 | 265 | 125 | 95 | 82 | 210 | 70 | DA 75 |
| 8P02610014 | 6 | 224 | 292 | 137 | 106 | 84 | 241 | 85 | DA 85 |
| 8P02610018 | 6 | 236 | 314 | 157 | 106 | 88 | 241 | 104 | DA 85 |