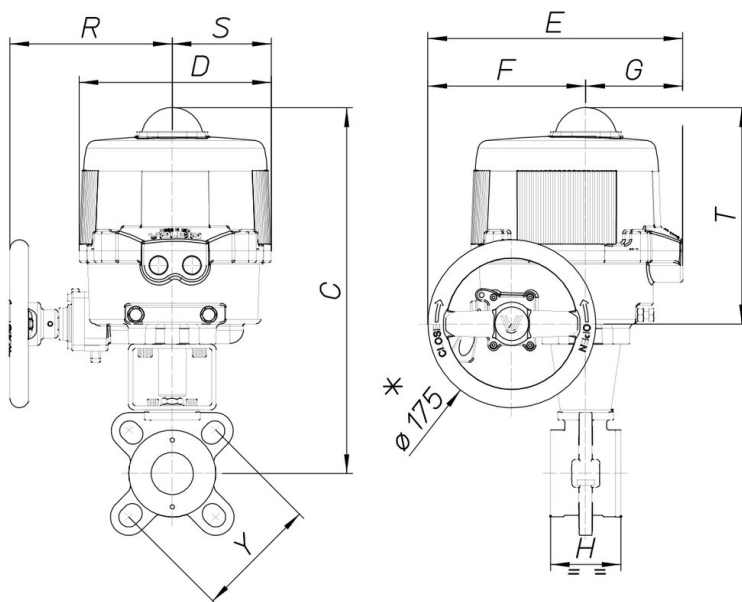


8M128

Valvola a sfera [Valpres art. 725000] flangiata tipo Wafer, in acciaio inox CF8M, ANSI 150, PN10-PN16-PN40 (PN40 non disponibile per DN65-80-100), passaggio totale.



Specifiche tecniche



| MOD | PN | C | D | E | F | G | H | R | S | T | Y | ACT. | RI |
|------------|----|-----|-----|-----|-----|-----|-----|-----|-----|-----|------------------------|---------|------|
| 8M12800106 | 40 | 298 | 161 | 187 | 63 | 124 | 46 | - | - | - | PN10-PN16-PN40 ANSI150 | VB 030M | 4230 |
| 8M12800206 | 40 | 298 | 161 | 187 | 63 | 124 | 46 | - | - | - | PN10-PN16-PN40 ANSI150 | VB 030M | 4230 |
| 8M12800406 | 40 | 298 | 161 | 187 | 63 | 124 | 46 | - | - | - | PN10-PN16-PN40 ANSI150 | VB 030M | 4230 |
| 8M12800107 | 40 | 301 | 161 | 187 | 63 | 124 | 54 | - | - | - | PN10-PN16-PN40 ANSI150 | VB 030M | 4230 |
| 8M12800207 | 40 | 301 | 161 | 187 | 63 | 124 | 54 | - | - | - | PN10-PN16-PN40 ANSI150 | VB 030M | 4230 |
| 8M12800407 | 40 | 301 | 161 | 187 | 63 | 124 | 54 | - | - | - | PN10-PN16-PN40 ANSI150 | VB 030M | 4230 |
| 8M12800108 | 40 | 337 | 176 | 197 | 63 | 124 | 64 | - | - | - | PN10-PN16-PN40 ANSI150 | VB 060M | 4231 |
| 8M12800208 | 40 | 337 | 176 | 197 | 63 | 124 | 64 | - | - | - | PN10-PN16-PN40 ANSI150 | VB 060M | 4231 |
| 8M12800408 | 40 | 337 | 176 | 197 | 63 | 124 | 64 | - | - | - | PN10-PN16-PN40 ANSI150 | VB 060M | 4231 |
| 8M12800110 | 40 | 346 | 176 | 197 | 63 | 134 | 82 | - | - | - | PN10-PN16-PN40 ANSI150 | VB 060M | 4231 |
| 8M12800210 | 40 | 346 | 176 | 197 | 63 | 134 | 82 | - | - | - | PN10-PN16-PN40 ANSI150 | VB 060M | 4231 |
| 8M12800410 | 40 | 346 | 176 | 197 | 63 | 134 | 82 | - | - | - | PN10-PN16-PN40 ANSI150 | VB 060M | 4231 |
| 8M12800112 | 20 | 394 | 200 | 266 | 165 | 101 | 103 | 167 | 103 | 225 | PN10-PN16-ANSI150 | VB 110M | 4233 |
| 8M12800212 | 20 | 394 | 200 | 266 | 165 | 101 | 103 | 167 | 103 | 225 | PN10-PN16-ANSI150 | VB 110M | 4233 |
| 8M12800412 | 20 | 394 | 200 | 266 | 165 | 101 | 103 | 167 | 103 | 225 | PN10-PN16-ANSI150 | VB 110M | 4233 |
| 8M12800114 | 20 | 404 | 200 | 266 | 165 | 101 | 122 | 167 | 103 | 225 | PN10-PN16-ANSI150 | VB 110M | 4233 |
| 8M12800214 | 20 | 404 | 200 | 266 | 165 | 101 | 122 | 167 | 103 | 225 | PN10-PN16-ANSI150 | VB 110M | 4233 |
| 8M12800414 | 20 | 404 | 200 | 266 | 165 | 101 | 122 | 167 | 103 | 225 | PN10-PN16-ANSI150 | VB 110M | 4233 |
| 8M12800118 | 20 | 417 | 200 | 266 | 165 | 101 | 152 | 167 | 103 | 225 | PN10-PN16-ANSI150 | VB 270M | 4233 |
| 8M12800218 | 20 | 417 | 200 | 266 | 165 | 101 | 152 | 167 | 103 | 225 | PN10-PN16-ANSI150 | VB 270M | 4233 |
| 8M12800418 | 20 | 417 | 200 | 266 | 165 | 101 | 152 | 167 | 103 | 225 | PN10-PN16-ANSI150 | VB 270M | 4233 |